

Vickers®

Service Data

Piston Pumps



10 & 15 USgpm Variable Thru Shaft, Side Ported, Inline Piston Pumps

PVB10-(F)**WY-30/31-*(*) (L)-1*

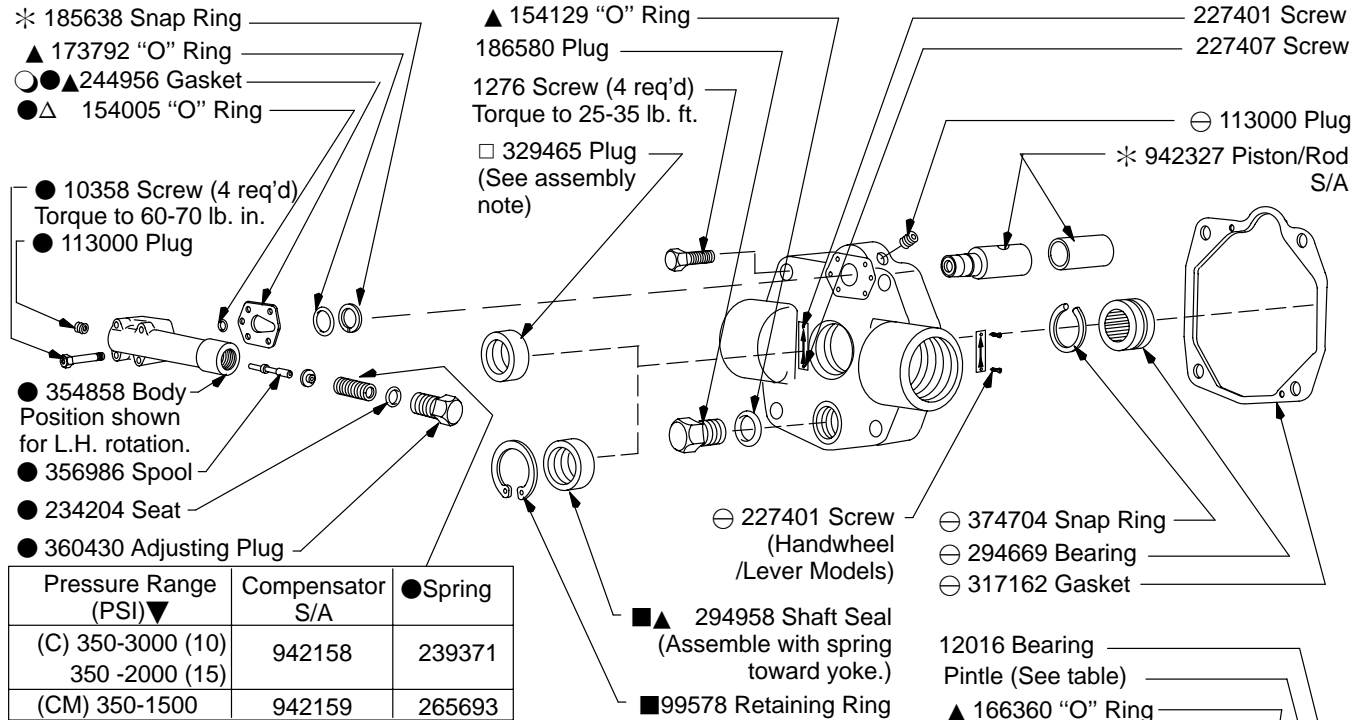
PVB15-(F)**WY-30/31-*(*) (L)-1*

PVB10-(F)**XY-30/31-*(*) (L)-1*

PVB15-(F)**XY-30/31-*(*) (L)-1*

Model	⊖ Valve Plate S/A	⊖ Rotation Plate
PVB10-RD*Y-30/31-H/M-10	942233	195060
PVB10-LD*Y-30/31-H/M-10	942234	
PVB15-RD*Y-30/31-H/M-10	942235	
PVB15-LD*Y-30/31-H/M-10	942236	
PVB10-RS*Y-30/31-C(*)-11	942237	
PVB10-LS*Y-30/31-C(*)-11	942238	404751
PVB15-RS*Y-30/31-C(*)-11	942239	
PVB15-LS*Y-30/31-C(*)-11	942240	

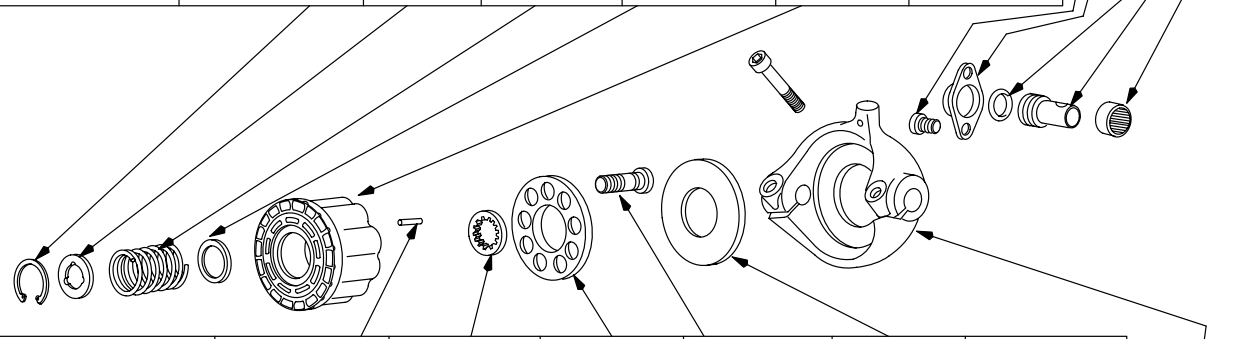
CAUTION
Do not exceed maximum pressure values indicated.



Pressure Range (PSI)▼	Compensator S/A	● Spring
(C) 350-3000 (10)	942158	239371
350 -2000 (15)		
(CM) 350-1500	942159	265693

● Included in Pressure Compensator S/A's shown in table.

MODEL	RETAINING RING	LIFT LIMITER	SPRING	THRUST WASHER	CYLINDER BLOCK	ROTATING GROUP KIT
	— THESE PARTS ARE INCLUDED IN ROTATING GROUP KIT —					
PVB10-***Y-30/31-**-1*	93509	245233	247294	241954	321703	938276
PVB15-***Y-30/31-**-1*					260860	938273



MODEL	PIN (3 REQ'D)	SPHERICAL WASHER	SHOE PLATE	PISTON S/A KIT	SWASH PLATE	ROTATING GROUP KIT
	— THESE PARTS ARE INCLUDED IN ROTATING GROUP KIT —					
PVB10-***Y-30/31-**-1*	248812	423324	275961	◆ 942229	239077	938276
PVB15-***Y-30/31-**-1*				◆ 941887		938273

CAUTION
Position compensator gasket with small end of teardrop hole pointing in direction of compensator adjusting plug.

Model	Yoke
H/M-10	325689
C(*)/CM-11	342743

▲ Included in 919729 Seal Kit

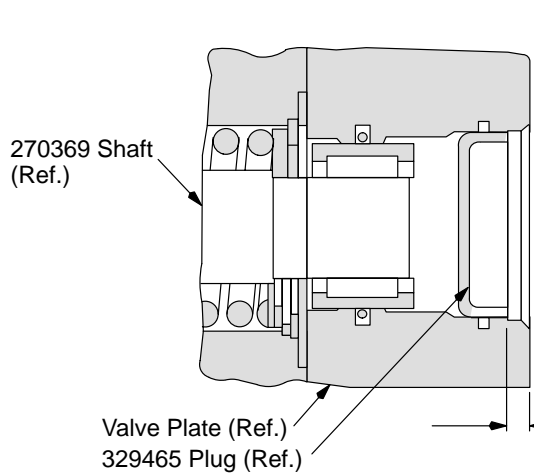
F3 Equivalent 920186 Seal Kit

○ Not used on Compensator Models


◆ Piston S/A includes 9 Piston and Shoe S/A

* Used only on Compensator Models

⊖ Included in Valve Plate S/A



Plug Assembly Note
 Make certain the 329465 Plug O.D. and the mating I.D. surface in the valve plate is clean. Apply sealing compound (Loctite A (10-1) or equivalent) to the plug O.D. and press plug into the valve plate as shown.

CAUTION
 Do not allow sealing compound to contact the bearing rollers.

Note
 Type 'C' & 'CM' Compensator Control Parts shown. See back page for manual controls. Refer to Parts Drawing I-3243-S for 'CVP' Pressure Limiting & Load Sensing Compensator Control.

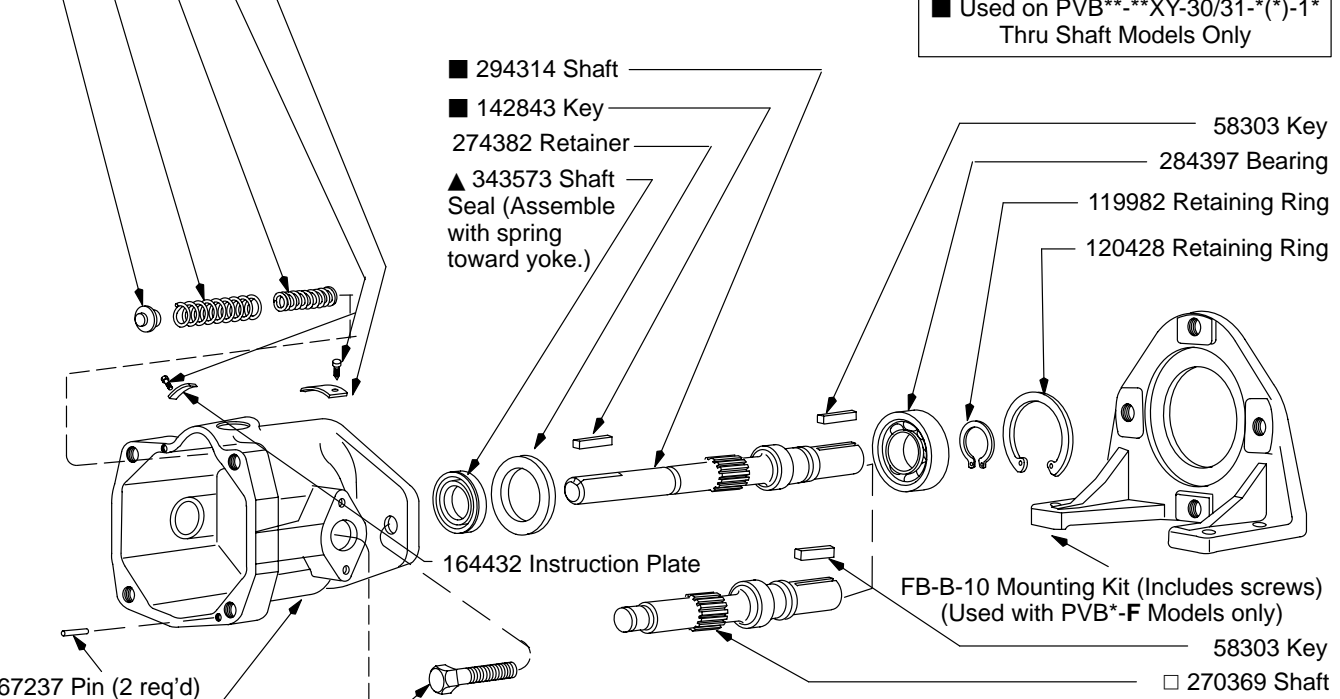
□ Used on PVB**_**WY-30/31-*(*)-1* Side Port Models Only

■ Used on PVB**_**XY-30/31-*(*)-1* Thru Shaft Models Only

- * 240535 Seat
- * 278634 Spring
- * 317239 Spring
- 227401 Screw (4 req'd)
- Name Plate

- 294314 Shaft
- 142843 Key
- 274382 Retainer
- ▲ 343573 Shaft Seal (Assemble with spring toward yoke.)

- 58303 Key
- 284397 Bearing
- 119982 Retaining Ring
- 120428 Retaining Ring



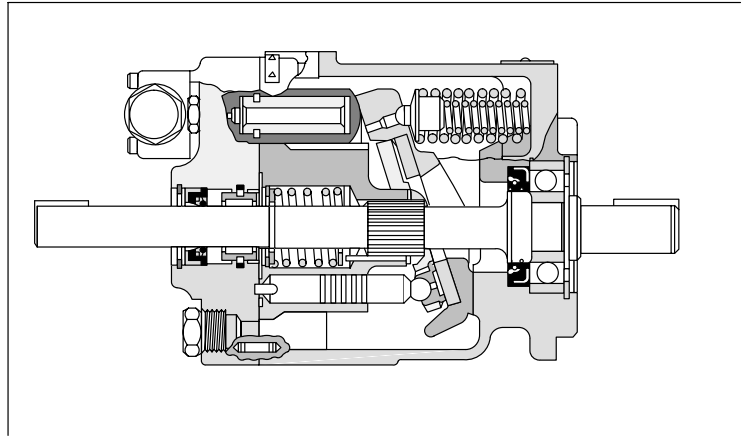
167237 Pin (2 req'd)

Model	Housing
H/M-10	308327
C(*)/CM-11	357652

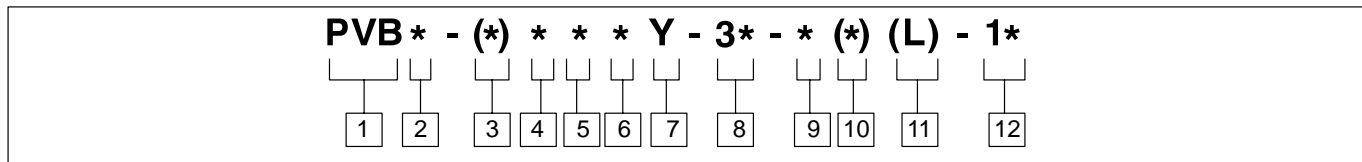
213298 Screw (2 req'd) PVB*-F Models only
 12016 Bearing

Model	Pintle	
	Control	Other
Handwheel	269657	265425
Lever	269658	
Compensator	265425	

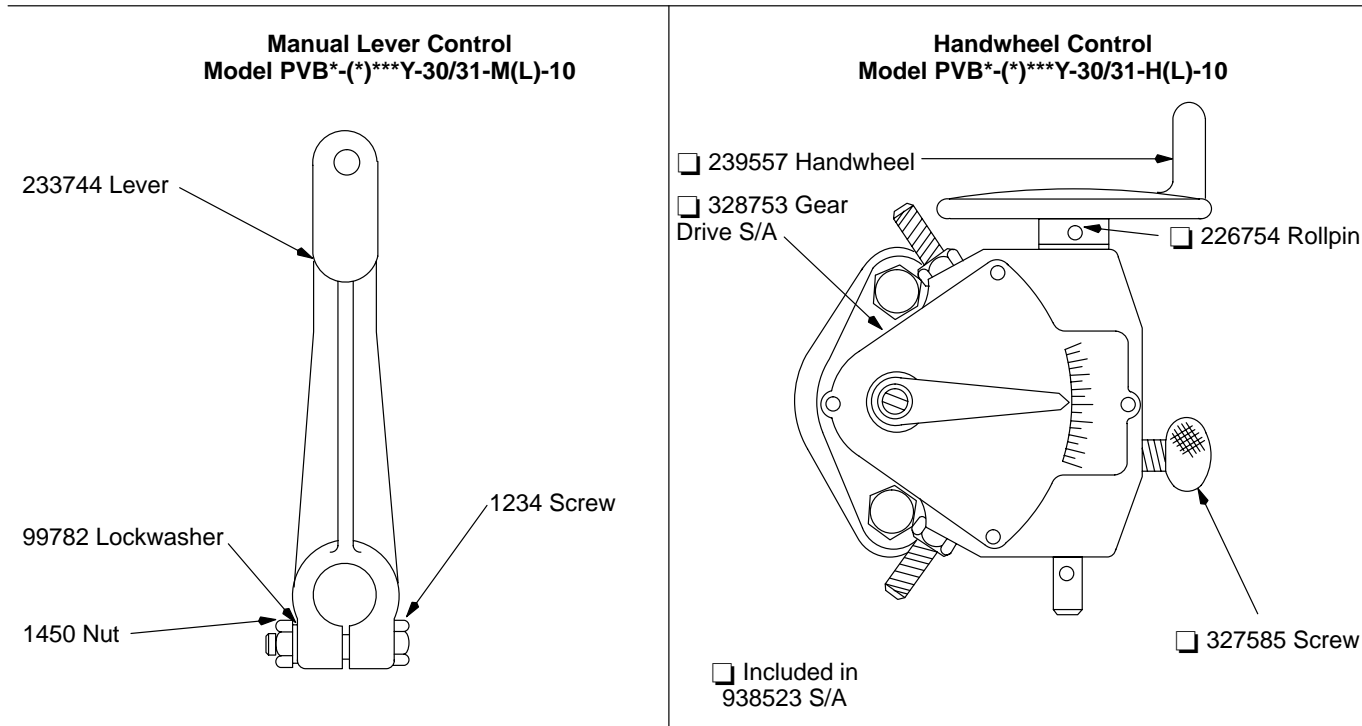
▲ 166360 "O" Ring



Model Code



- | | | |
|--|--|--|
| <p>1 Model
Variable displacement pump, inline piston unit</p> <p>2 Flow rating @ 1800 rpm
10 - 10 USgpm
15 - 15 USgpm</p> <p>3 Mounting
F - Foot bracket
(Omit for flange mount)</p> <p>4 Rotation
Viewing from shaft end
R - Right hand
L - Left hand</p> | <p>5 Swash Plate Movement
D - Both sides of center
S - One side of center</p> <p>6 Optional Features
W - Side ports
X - Side ports-thru shaft</p> <p>7 Shaft End
Y - Standard</p> <p>8 Pump Design
-30/-31</p> | <p>9 Control Type
Pressure Compensator
C - 250-3000 psi (5 USgpm)
250-2000 psi (6 USgpm)
CM - 250-1500 psi (5-6 USgpm)
CVP- Pressure limiter load sensing
H - Handwheel
M - Lever</p> <p>10 Compensator Variations
C - Adjustable Maximum Displacement Stop
(See I-3255-S)</p> <p>11 Control options
L - Left hand viewing shaft end
(Omit for right hand)</p> <p>12 Control Design Number</p> |
|--|--|--|



For satisfactory service life of these components, use full flow filtration to provide fluid which meets ISO cleanliness code 16/13 or cleaner. Selections from pressure, return, and in-line filter series are recommended.