

Service Data

**Vickers®**

# Steering

---



## Power Steering Pumps

VT 16/17-100-\*\*-\*\*-\*\*-10-(LH)



Revised 12/01/87

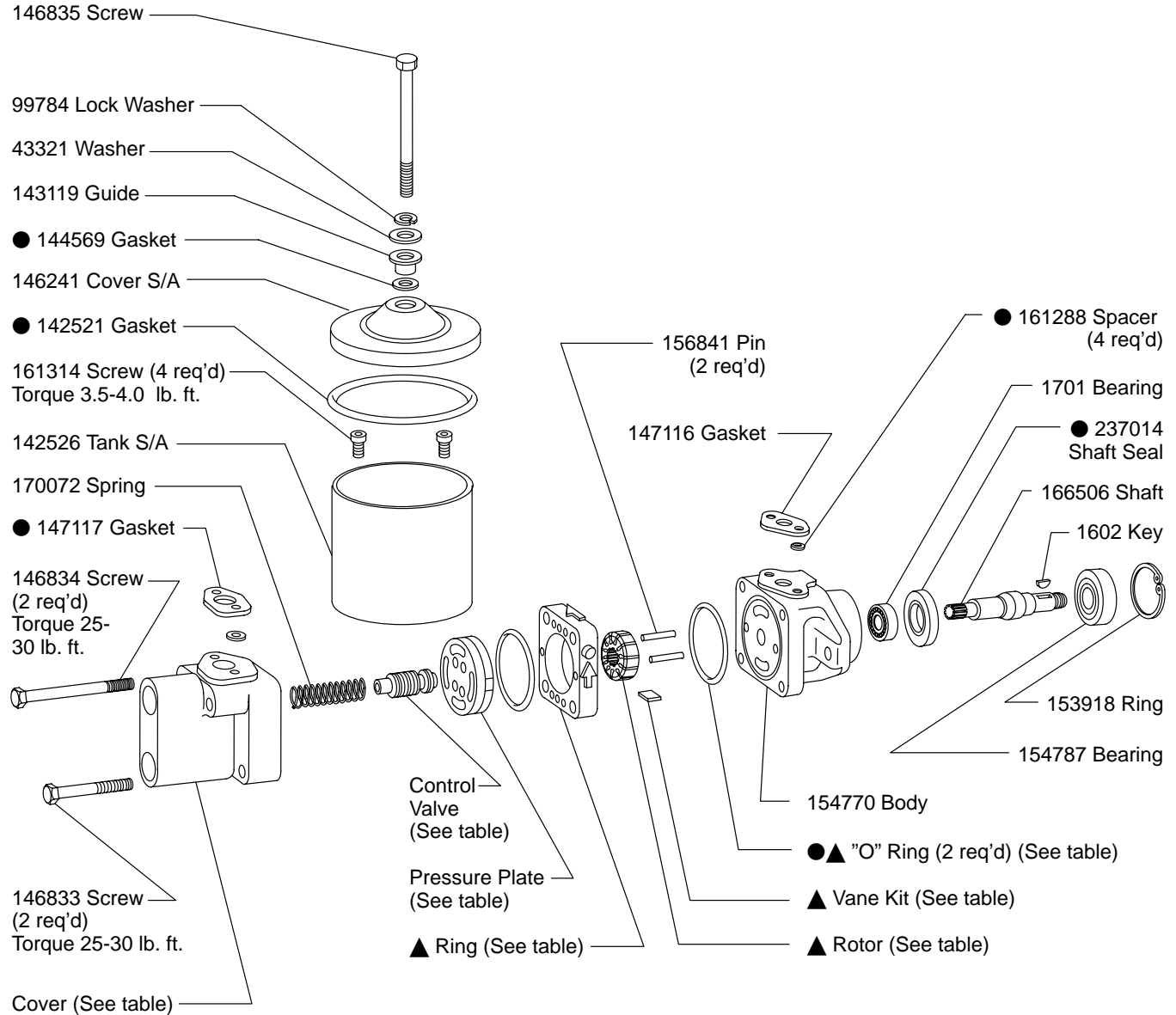
M-1371-S

**VT16-100-\*\*-\*\*-\*\*-10**

Model	▲ Vane Kit (12 Vanes)	●▲ "O" Ring (2 req'd)	▲ Rotor	▲ Ring	Cartridge Kit
VT16-100-15-**-**-10	912008	143216	141393	143557	912054
VT16-100-40-**-**-10				141395	912059

Controlled Flow Rate	Cover
VT16-100-**-**-15-**-10	168422
VT16-100-**-**-25-**-10	172928
VT16-100-**-**-30-**-10	169035
VT16-100-**-**-40-**-10	151016
VT16-100-**-**-50-**-10	170427

Relief Setting	Control Valve
VT16-100-**-75-**-10	232794
VT16-100-**-95-**-10	232795
VT16-100-**-120-**-10	232796
VT16-100-**-150-**-10	232797



● Included in Seal Kit 922712

▲ Included in Cartridge Kits

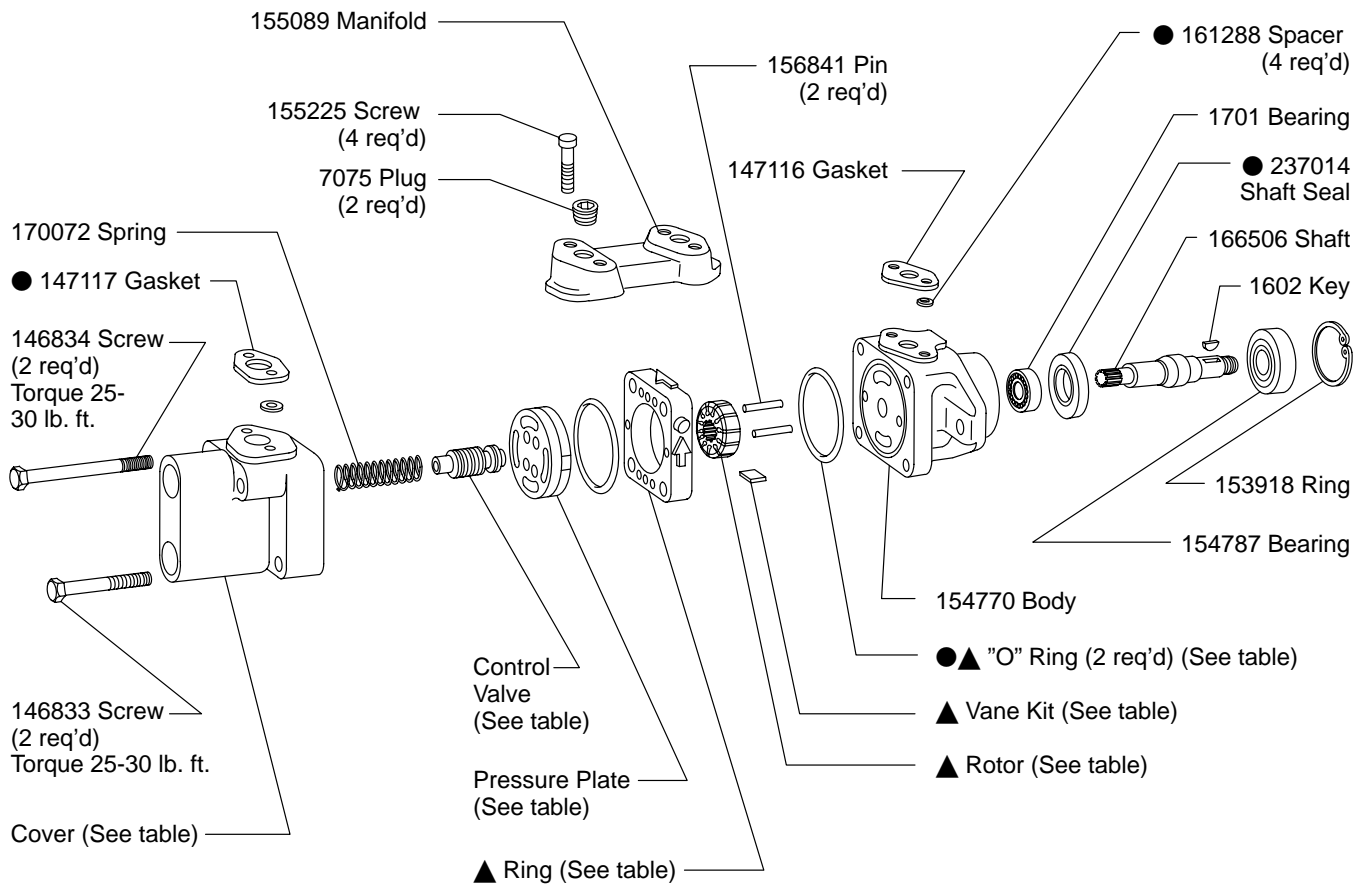
Pressure Plate	Shaft Rotation
155109	Right Hand
158656	Left Hand
Viewed from Shaft End	

**VT17-100-\*\*-\*\*-\*\*-10**

Model	▲ Vane Kit (12 Vanes)	●▲ "O" Ring (2 req'd)	▲ Rotor	▲ Ring	Cartridge Kit
VT17-100-15-**-**-10	912008	143216	141393	143557	912054
VT17-100-40-**-**-10				141395	912059

Controlled Flow Rate	Cover
VT17-100-**-**-15-**-10	168422
VT17-100-**-**-25-**-10	172928
VT17-100-**-**-30-**-10	169035
VT17-100-**-**-40-**-10	151016
VT17-100-**-**-50-**-10	170427

Relief Setting	Control Valve
VT17-100-**-75-**-10	232794
VT17-100-**-95-**-10	232795
VT17-100-**-120-**-10	232796

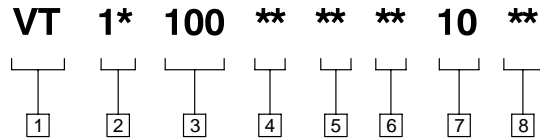


● Included in Seal Kit 922712

▲ Included in Cartridge Kit

Pressure Plate	Shaft Rotation
155109	Right Hand
158656	Left Hand
Viewed from Shaft End	

# Model Code



**1 Vane Type**

**2 Options**

- 16 - With Reservoir
- 17 - With Manifold

**3 Series**

**4 US GPM Capacity**

- 15 - 1.5 GPM
- 25 - 2.5 GPM
- 40 - 4.0 GPM

**5 Relief Valve Setting**

- 75 - 750 PSI
- 95 - 950 PSI
- 120 - 1200 PSI
- 150 - 1500 PSI

**6 Controlled Flow**

- 15 - 1.5 GPM
- 25 - 2.5 GPM
- 30 - 3.0 GPM
- 40 - 4.0 GPM
- 50 - 5.0 GPM

**7 Design**

**8 Rotation**

- (Viewed from Cover End)
- LH - Left Hand Rotation
  - Omitted - Right Hand Rotation

For satisfactory service life of these components in industrial applications, use full flow filtration to provide fluid which meets ISO cleanliness code 18/15 or cleaner. Selections from Eaton OFF, OFR, and OFRS series are recommended.